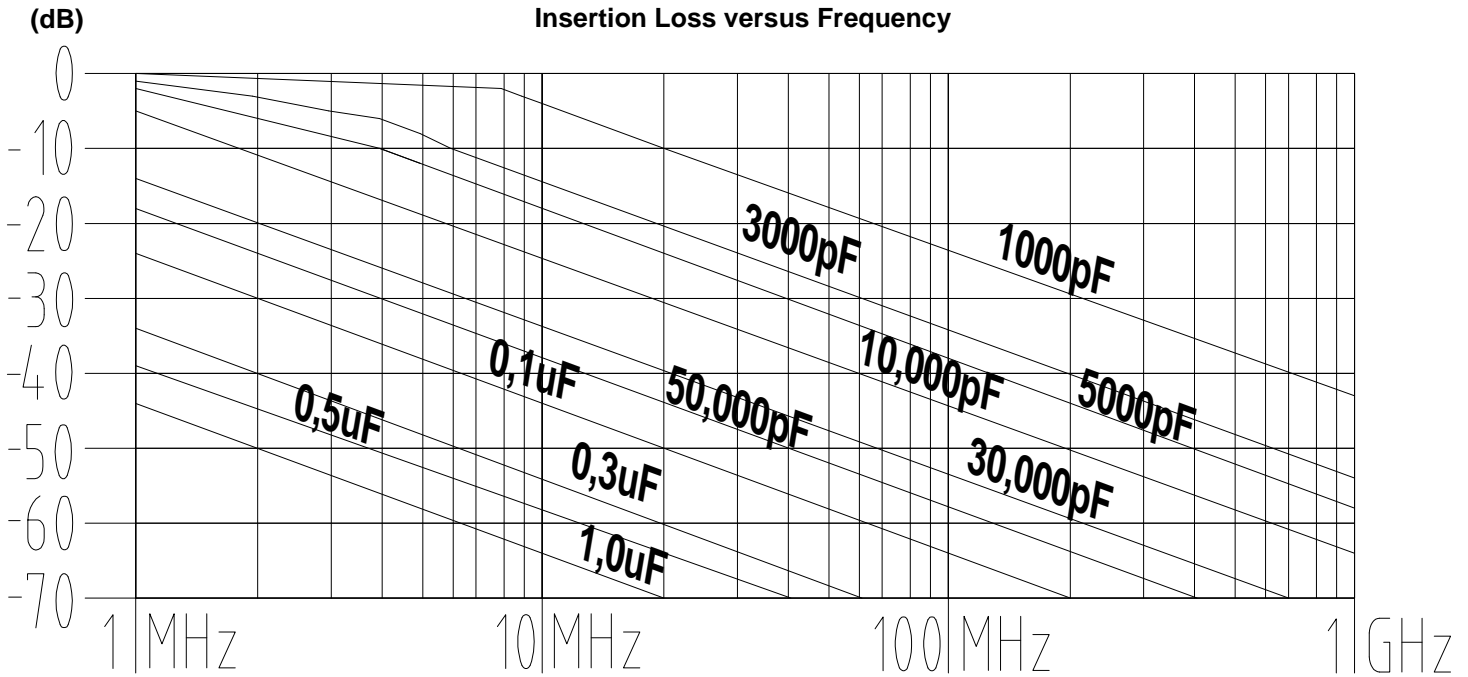
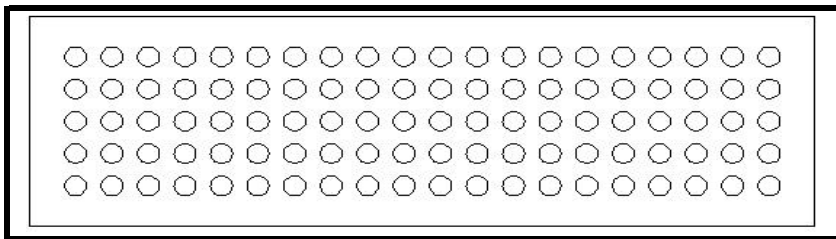


Planar Multilayer Arrays



Planar discoidal Array offers a large number of contacts in a small overall package. Different capacitance values can be assigned to each hole. In addition to the circular outline in this catalogue, INSTEC can design custom arrays to meet customer specific needs in a wide variety of sizes and hole configurations.



100 Pin Planar Array

General Specifications:

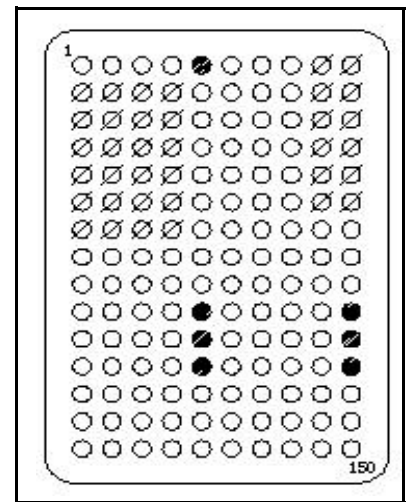
Mechanical:

Tolerance: +0.5% or 0.006", whichever is greater.
 Thickness: 0.03" to 0.120"
 Camber: 0.04" / 0,102 (mm)

Termination Materials: Silver \ Palladium, Silver \ Palladium \ Platinum

Electrical:

Temperature Coefficient : X7R
 Capacitance Test @ 25°C : Per MIL-STD-202 method 302, measured hole to ground, 1000 Mohms or 1000 Mohms / uF, whichever is less
 Diel. Withstanding Voltage @ 25°C : Measured hole to hole to ground, @ 250% rated voltage for 5 seconds with 50 mAmps charging current
 Dissipation Factor : 2.5% maximum
 Insulation Resistance : 1000 mohm \ uF @ 25°C
 Operating Temperature : -55°C to +125°C



150 Pin planar array